



INTER CELENEC

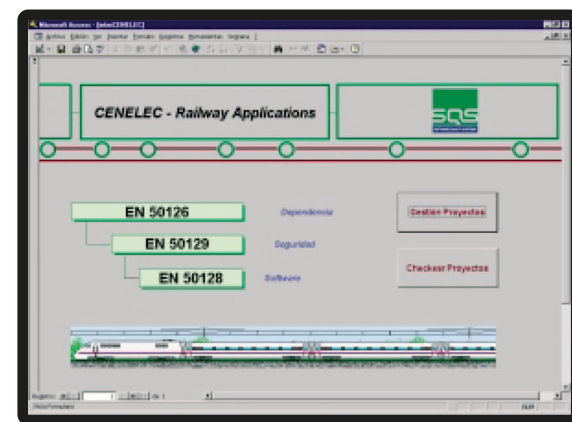
InterCELENEC is a tool developed by SQS to manage the developments that must comply with CENELEC 50126, 50128 and 50129* standards. This tool offers user a support in the evaluation of compliance with these standards and provides a necessary guidelines during the implementation process.

InterCELENEC may be used by both external evaluator and the internal implant as assistance to its management.

External Evaluator

During the evaluation, the tool offers you the functionalities necessary to:

- Guide you in evaluation work
- Customize your questions
- Manage efficiently the information
- Generated during the evaluation



Internal Team

From a team or an internal implant point of view, the tool meets a triple purpose:

- Evaluate in what state your developments are regarding the levels of security required by the standard
- As support during the implementation process, **InterCELENEC** will indicate the guidelines to continue to reach the required level of security
- The possibility of being able to show third parties the degree of compliance with the standard.

50126: "Railway Applications: specification and demonstration of Dependence – Reliability, Availability, Maintenance and Security (RAMS)."

50128: "Railway Applications: Software for railways Control and Protection Systems."

50129: "Railway applications: Electronic systems for signaling related to security."

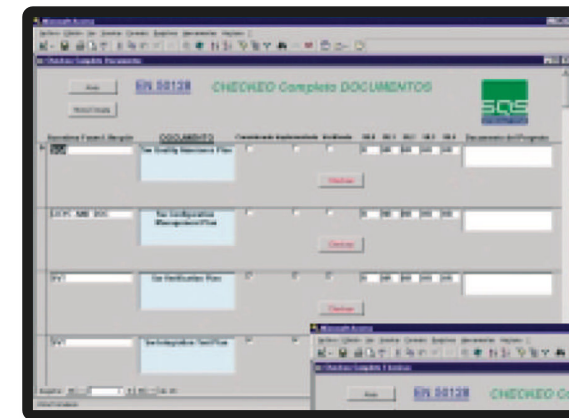
For **InterCELENEC** a project is associated with a new development, according to its criticality, that should meet a certain level of security. In this sense, the tool allows manage all stages, phases, documents, techniques and activities during development of the project so that it is in accordance with the standard.

The level of security required for a project is called SIL (Safety Integrity Level). Depending on the SIL, which will depend on the level of risk associated with the project, **InterCELENEC** prioritizes some techniques over others. There are five standards levels of Software Security Integrity:

- 4 - Very high
- 3 - High
- 2 - Medium
- 1 - Low
- 0 - Not related to security

Aset of recommendations is defined for each level applicable for both documentation and techniques to use:

- M - Mandatory
- HR - Highly Recommended
- R - Recommended
- NR - Not Recommended
- -- - There is no recommendation



InterCELENEC use this classification in its evaluation processes and implementation.

Documents

The standards make recommendations about structuring and content documentation. **InterCELENEC** allows the management of relevant documents for each security level.

Techniques

InterCELENEC can assess the degree of compliance with the techniques recommended by CENELEC in each phases. It also allows defining new techniques such as complement to existing ones.

Clauses

A CENELEC standard includes a certain number of clauses. In relation to regulations, **InterCELENEC** knows the corresponding clauses and allows to determine the degree of compliance with the project.

Phases

A phase is an step in the development of a project as conceived by CENELEC. **InterCELENEC** allows to manage all the phases of a project that include, not only the software development and hardware, but also project management, the Quality assurance and maintenance.